



Weekly eWheel for the

Rotary Club of St. Joseph-Benton Harbor



Michigan, USA • District 6360 • Chartered 1918

MAY 14, 2018

After several weeks of sunshiny Mondays, we had a rainy day for our meeting this week. If April showers, bring May flowers, what do May showers bring...?

2018 RURAL AG DAY



and as they've come down in price in the last 5-10 years, their use has become much more accessible.

So, what do you do with pictures captured from UAVs or drones? It might be as simple as getting heritage pictures of the farmstead but the value is really in the information you can gather about your fields. When viewing the fields, a farmer might be looking at drainage after a rain event or assess damage from water, they could also use to check irrigation equipment or coverage. If a farm has animals, they might also use this technology to locate or count the herd. This technology is also helpful in attracting the next generation to farming.

Each year, we celebrate our agricultural community with a specially themed meeting and with open invitation to the local farming community. This year, our guest speaker was Eric Anderson from the MSU Extension who spoke to us about the use of Unmanned Aerial Vehicles (UAVs) or drones in agriculture.

UAVs aren't the only way to get information about your fields--farmers also use planes and satellites to gather similar information. As drone technology has advanced and become more widespread,

MICHIGAN STATE UNIVERSITY EXTENSION

Continued on page 4

IMPORTANT DATES

- ❖ 5/21 Meeting: Whitney Shuneman, Controlling Inflammation through Diet
- ❖ 5/23: May Board Meeting at Area Agency on Aging at 7:30 AM
- ❖ 5/28: NO MEETING PER MEMORIAL DAY
- ❖ 6/11 Meeting: Kevin Roney, Green Technology
- ❖ 6/16: Celebrating a Century of Service at LMC Grand Upton Hall
- ❖ 6/18: NO MEETING PER 100-YEAR CELEBRATION
- ❖ 7/14: July Adopt-A-Roadway Clean-up

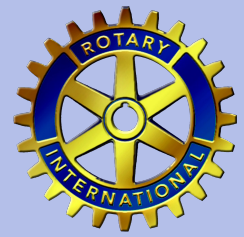
The Rotary Club of Saint Joseph - Benton Harbor

100

Rotary's Centennial Celebration

[CLICK HERE](#) to register for our 6/16 centennial event on DacDb - go to CALENDAR -

JOKE OF THE WEEK



ROTARIANS WITH GUESTS

Rich Burling brought Rob Powell
Julie Duensing brought Matthew Mast

Welcome also to all the members of the local agricultural community who joined us for the special meeting on this day!

Rotary



THE FOUR-WAY TEST

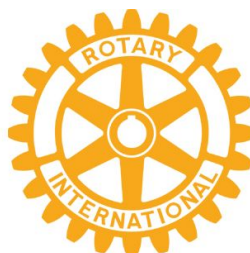
of the things we think, say or do

- 1 Is it the **TRUTH**?
- 2 Is it **FAIR** to all concerned?
- 3 Will it build **GOODWILL** & **BETTER FRIENDSHIPS**?
- 4 Will it be **BENEFICIAL** to all concerned?

LOCAL CLUB MEETING DAYS, LOCATIONS & TIMES

- ❖ Benton Harbor-Sunrise, Wednesdays, 7:00 a.m., Elks Lodge, 601 Riverview Drive, Benton Harbor
- ❖ Lakeshore, Thursdays, 12:12 p.m., First Church of God, 5767 Red Arrow Highway, Stevensville
- ❖ Paw Paw Lake, Wednesdays, 12:00 p.m., Lakeland Medical-Watervliet, 400 Medical Park, Watervliet
- ❖ Harbor Country, Fridays, 7:30 a.m., Lakeside United Methodist Church Community Room, 14970 Lakeside Road, Lakeside, MI

If you want to visit other district 6360 club meetings, log into DacDb, at the top left, click on Clubs, then a full listing of clubs will appear and now look left again under Where Clubs Meet and you will see all days, times, google map, list of club officers and more.



**ROTARY:
MAKING A
DIFFERENCE**

100-YEAR CELEBRATION UPDATE

Meetings of the 100-Year Celebration committee will be taking place on the following dates. All meetings will be at 1:15 PM at the Heritage Museum, after our regular meeting.

Please mark the following meeting dates on your calendar:

May 21

June 4 and 11

With so few meetings left to pull everything together, the committee would greatly appreciate any additional collaborators. Please feel free to join any meeting or to connect with Dave Peterson (dpeterson@lawssa.com) directly for more info.

The Rotary Club of
Saint Joseph - Benton Harbor

100

Rotary's Centennial Celebration

EVENT SPONSORSHIPS ALSO STILL AVAILABLE

[CLICK HERE](#) FOR THE SPONSORSHIP PACKET



MEMBERSHIP MEETINGS

Open Membership Committee Meetings will be held every third Wednesday of the month at 12:00 PM at Villa Environmental Consultants at 215 Colfax in Benton Harbor. Bring your lunch and share your thoughts and ideas with the team.

ST. JOSEPH-BENTON HARBOR ROTARY FOUNDATION BOARD UPDATE

Our Club Foundation has a Board of Directors composed of the 3 most recent past-presidents of our Club and 6 members-at-large that serve staggered 3 year terms. Members-at-large are eligible to serve 2 consecutive 3 year terms and are appointed by the SJ-BH Rotary Club Board of Directors.

At the end of this Club year past-president Maria Kibler will rotate off the Board on June 30 as she has served 3 years and Rick Villa will join the Board as the most recent past-president.

Members-at-large Dale Park and Mike Hanley are completing their second 3 year terms and will rotate off the Foundation Board on June 30.

Also, Steve Ross is “retiring” from serving as Treasurer of the Club Foundation June 30 as he is from serving as the Treasurer of our Club. Tom Watson, new Treasurer of the Club, was appointed Treasurer of the Club Foundation effective July 1 by the Foundation Board at the April 23 Board meeting.

Bob Peirce and Prudy Nelson expressed interest in serving as members-at-large and are qualified to serve under the Club Foundation Bylaws ... members-at-large must be Club members in good standing and either a Benefactor or Sustaining Benefactor. Benefactors are Club members that have contributed \$1,000 or more to the Club Foundation and Sustaining Benefactors are Club members that have contributed to the Club Foundation toward a goal of \$1,000. Bob and Prudy were appointed members-at-large effective July 1, by the Club Board of Director at the April 25 Club Board meeting.

The Club Foundation has an Investment Advisory Committee comprised of Mike Cook, Chairman, Randy Bettich, Rick Dyer, Mike Kinney and Allan Westmaas. The Club Foundation Treasurer and Foundation Secretary also serve on the Investment Advisory Committee. Accordingly, effective July 1, Tom Watson will also serve on the Investment Advisory Committee.

2018 RURAL AG DAY (CONTINUED)

UAVs are also used for scouting crops. They can show crop development (tassel emergence), disease or insect damage, weed outbreak, storm damage (hail, wind, flood), or wildlife damage.

UAVs use multispectral analysis (near infrared) to measure crop health. They measure the reflectants of those wavelengths from the crop canopy. This technology can show the difference between dead, stressed, and healthy leaves.

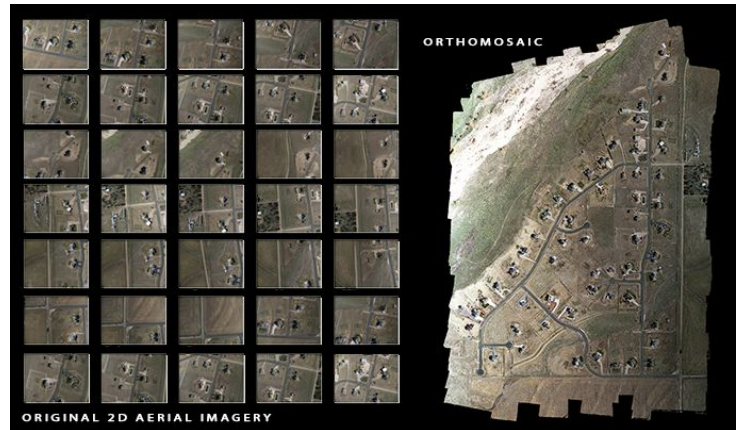
Eric also shared some information about some of the things that UAVs CAN'T do. UAVs can't see through things (including clothing). They can't read the date on a dime from 400' away. They also can't tell you what's wrong with a crop or what you need to do to fix it. They can provide data but you need to have a plan for interpreting that data in order for it to be useful.

If you're interested in getting started with drone technology in agriculture, the first step is to get licensed with the FAA. This is required because it is considered commercial use. This test is similar to a pilot's license test and includes information about airspace such as flight height limitations and communications requirements for those close to restricted airspace.

You also need to determine what type of drone you need. A fixed wing drone gives you more coverage but the multi-rotor models are easier to fly and come in different sizes. The size you need depends on what type of payload you want it to carry.

Eric advised that you should also determine what type of drone you can afford to crash. Drone prices range anywhere from \$20 toy models to \$5,000+ heavy-duty machines. He also recommend purchasing the toy model to practice flying before working your way up to the more advanced models.

When incorporating drone technology, it's also very important to have a plan for how you're going to use the data. Drones take a series of pictures that need to be combined to create the orthomosaic.



You also need to have a plan for the storage, processing and analyzing the data. Options include USB or SD card but that's difficult for sharing data. There are cloud-based options that enable greater sharing. You can also purchase software to aid in processing and storing the images. Another option is to outsource the whole thing--there are many companies now that specialize in providing these services to the farming community.

Eric also took some time to share his thoughts on the future of UAVs in agriculture. He sees improved sensors and costs continuing to go down. He sees the capability to spray for pests--including in-flight analysis to inform spray decisions and real-time pest identification. He also sees more autonomous field mapping and fewer overlaps required to create the orthomosaic images (now there's about a 75% overlap). As the technology improves, he also expects the data process time to decrease allowing for the creation of field maps in real time.

WANT TO CONTRIBUTE TO THE eWHEEL?

Your weekly email is brought to you by Emily Kirchner, Brandi Smith-Gordon and Lisa Cripps-Downey with photography by Jen Cole. If you have an announcement, a bit of news you wish to share, or a story you wish to see featured, please write to RotarySJBH@gmail.com.

Connect with the Rotary Club of St.

Joseph-Benton Harbor

online at www.sjbhrotary.org



[Like us on Facebook!](#)

ROTARY CLUB OF ST. JOSEPH-BENTON HARBOR 2017-2018 CLUB COMMITTEES

CLUB LEADERSHIP

President: Rick Villa
President-Nominee: TBD
Treasurer: Steve Ross

President-Elect: Wendy Edwards
Immediate Past President: Stephen Smith
Secretary: Janice Ferguson

Board of Directors: Dwight Bowman, Matt Hanley, Nicole Heugel, Jackie Huie, Charles Jespersen, Maria Kibler, Emily Kirchner, Lori Marciniak and Mary Spiegel

CLUB ADMINISTRATION Rick Villa	CLUB & COMMUNITY SERVICE Patti Kutz	MEMBERSHIP Charles Jespersen (Interim)
<p>50/50 Raffle - Jim Roberts (interim), Joen Brambilla, Rachel Damaske, Julie Duensing, Wendy Edwards, Jan Ferguson, Jennifer Gardner, Ron Goos, Melissa Hahn, Donna Howard, Cindy Igoe, Patti Kutz, Adam Lieberman, John Olson, Jim Roberts, Therese Saggau, Chuck Wells, Autumn Zick, Mark Zielke</p> <p>Music - Allan Westmaas & Dennis Bowen, Dwight Bowman, Kurt Marzke, Christine Vanlandingham, Janet Zielke</p> <p>Sergeant-At-Arms - Matt Hanley, Randy Bettich, Bill Downey, Sean Ebbert, Kurt Marzke, Mike Peirce, Mary Spiegel, Tom Watson, Russ Zick</p> <p>Programs - Wendy Edwards</p> <p>Invocation - Dave Kirshenbaum, Randy Bettich, Dennis Bowen, Chad Deja, Wendy Edwards, Lynn Kellogg, Patti Kutz, Lori Marciniak, Jim O'Malley, Christine Vanlandingham, Char Wenham, Allan Westmaas</p>	<p>St. Joseph-Benton Harbor Rotary Club Foundation - Maria Kibler (President), Bob Judd (Secretary), Steve Ross (Treasurer), Lisa Cripps-Downey, Mike Hanley, Mike Huie, Mike Kinney, Dale Park, Steve Smith, Tom Starks, Char Wenham</p> <p>St. Joseph-Benton Harbor Rotary Club Foundation Investments - Mike Cook, Randy Bettich, Rick Dyer, Bob Judd, Mike Kinney, Steve Ross, Allan Westmaas</p> <p>Adopt-A-Highway - Steve Smith</p> <p>Bell Ringing - Sean Ebbert</p> <p>Celebrate Rotary - Will resume in 2019</p> <p>Law Day - Steve Smith</p> <p>Rural Ag Day - Art Cotter</p>	<p>Diversity - Dwight Bowman</p> <p>Membership - Dwight Bowman, Rich Burling, Rachel Damaske, Julie Duensing, Wendy Edwards, Jan Ferguson, Matt Hanley, Jackie Huie, Charles Jespersen, Lynn Kellogg, Debra Trapikas, Christine Vanlandingham</p> <p>Orientation - Lynn Kellogg & Christine Vanlandingham</p>
		YOUTH SERVICE Jackie Huie & Maria Kibler
		<p>Essay Contest - Jacqui Winship, Bill Benner, Dave Kirshenbaum, Patti Kutz, (Judges: Joen Brambilla, Ann Cardon, Lisa Cripps-Downey, Nicole Heugel, Donna Metz, Jim O'Malley, Jack Sukup, Janet Zielke)</p> <p>Interact - Maria Kibler, Steve Borre, Mary Frey, Jackie Huie, Cindy Igoe, Marian Rosko Titus</p> <p>Rotary Student Program - Jackie Huie, Kristi Aubrey, Mary Frey, Mike Huie, Maria Kibler, Trevor Kubatzke, Dave Peterson, Steve Smith, Rick Villa</p>
INTERNATIONAL INITIATIVES Mike Kinney	PUBLIC IMAGE Emily Kirchner	
<p>Bio-Sand Water Filter Project - OPEN</p> <p>International Foundation & Polio Plus - Tom Chapman</p> <p>International Initiatives - Mike Kinney, Wendy Edwards, Jan Ferguson, Mary Frey, Charles Jespersen, Prudy Nelson, Mary Spiegel</p>	<p>eWheel Newsletter - Emily Kirchner, Lisa Cripps-Downey, Brandi Smith-Gordon</p> <p>Membership Directory - Chris Newland, Robyn Johnson</p> <p>Photographer - Jen Cole</p> <p>Public Relations - Emily Kirchner, Jackie Huie</p> <p>Website & Social Media - Emily Kirchner</p>	<p>RYLA - Lori Marciniak</p> <p>Track Meet - Randy Bettich, J.C. Anderson, Dennis Bowen, Jim O'Malley</p> <p>Track Meet Scholarship - Dennis Bowen, Brian Berger, Joen Brambilla, Bill Marohn, Jim Marohn, Mary Kynast, Christine VanLandingham</p> <p>Youth Exchange - Kristi Aubrey, Debra Trapikas</p>
AD HOC COMMITTEES	<p>Celebrating a Century of Service - Dave Peterson, Debra Trapikas, Renee Borah, Wendy Edwards, Jan Ferguson, Mary Frey, Charles Jespersen, Matt Hanley, Nicole Huegel, Tom Watson</p>	